



Detect

Scope:

- Alarming
- Overview
- Management
- Reporting

Detect Dashboard

Trouble Dashboard

Filter: impaired Elements only muted

Severity	Type	Size	Host	Detected	Status	Actions
MAJOR	Outage	30/70	Wlk - Turnerstr	35 minutes ago	Open	[Icons]
MAJOR	Outage	30/70	ORA Wolkenstein - Turnerstr. 7	1 hour ago	Open	[Icons]
MINOR	Outage	10/97	VGP Zöblitz - Vorwerk	3 minutes ago	Open	[Icons]
INFO	Outage	2/19	VGP Seiffen - Schwartenbergweg 14	35 minutes ago	Open	[Icons]
INFO	Outage	2/4	ORA Kunnersdorf	50 minutes ago	Open	[Icons]
INFO	Proactive		mablx10.nms10.erznet.tv	7 minutes ago		[Icons]
INFO	Proactive		VGP Lengefeld Ecke Feld-Weststr. - Gärtner	36 minutes ago	Open	[Icons]
INFO	Proactive		VGP Seiffen Hauptstr. 43- Garage	36 minutes ago	Open	[Icons]
INFO	Proactive		olb-cable-gw10	1 minute ago	Open	[Icons]
INFO	Proactive		VGP Seiffen - Bergsiedlung Str. 16 unterhalb	13 minutes ago	Open	[Icons]
INFO	Proactive		VGP Seiffen - Deutschneudorfer Str.40	21 minutes ago	Open	[Icons]

Activity log

15-02-2021

- updated Net Element Show the change 1 hour ago
- updated Net Element Show the change
- updated Net Element Show the change
- updated Net Element Show the change
- updated Net Element Show the change
- updated Net Element Show the change
- updated Net Element Show the change

ALL OPEN TICKETS View Details

32

System Summary

Summary

Modems

- 5904 Modems with good signal
- 468 Modems in warning state
- 81 Modems in critical state
- 1053 Modems offline

Net Elements

- 382 Net Elements are online
- 14 Net Elements in critical state

Services

- 1180 Services are online
- 42 Services in warning state
- 6 Services in critical state
- 16 Services in unknown state

Cacti System

Icinga2 System

External



Detect

- Tabular overview of all notifications, categorized and sorted by severity and size
- Every line can be unfold for additional information

Severity	Type	Size	Host	Detected	Status	Actions
MAJOR	Outage	30/70	ORA Wolkstein - Turnerstr. 7	1 hour ago	Open	[Icons]
● outage				ORA Wolkstein - Turnerstr. 7 (50.0%)		35/70 offline
				ORA Wolkstein - Turnerstr. 7 (57.1%)		

- Fast and compact overview of your network with “System Summary”
- Oversee all relevant activities in the “Activity log”

System Summary

Summary

- Modems**
 - 5904 Modems with good signal
 - 468 Modems in warning state
 - 81 Modems in critical state
 - 1053 Modems offline
- Net Elements**
 - 382 Net Elements are online
 - 14 Net Elements in critical state
- Services**
 - 1180 Services are online
 - 42 Services in warning state
 - 6 Services in critical state
 - 16 Services in unknown state



Detect

Severity	Type	Size	Host	Detected	Status	Actions
+ MAJOR	Outage	30/70	Wik - Turnerstr	35 minutes ago	Open	  

- Two ways of investigating are possible:
 - Receive detailed information about the impaired element under the “Host” column
 - Quick-Link to the **Entity-Relation-Diagram** of the corresponding cluster
- For faster ticket resolution, create one via the ticket icon inside the “Actions” column
- A notification is recognized as irrelevant for a specific time frame, mute it with the bell icon inside “Actions”





Detect

- All desired device information queried via SNMP
- Control device settings

In this example only the relevant DS and US channels are shown

Severity	Type	Size	Host	Detected	Status	Actions
MAJOR	Outage	30/70	Wik - Turnerstr	35 minutes ago	Open	

Technical overview

Show 10 entries [Print](#) [Export to](#) [Column Visibility](#) Search:

Index	ifAlias	docsIfDownChannelId	DS Frequency	docsIfDownChannelModulation	DS Power
31481	Turnerstr downstream1	25	242	qam64	44
31482	Turnerstr downstream2	26	250	qam64	44
31483	Turnerstr downstream3	27	258	qam64	44
31484	Turnerstr downstream4	28	266	qam64	44
31485	Turnerstr downstream5	29	274	qam64	44
31486	Turnerstr downstream6	30	282	qam64	44
31487	Turnerstr downstream7	31	290	qam64	44
31488	Turnerstr downstream8	32	298	qam64	44
31489	Turnerstr downstream9	33	306	qam64	44
31490	Turnerstr downstream10	34	314	qam64	44

Showing 1 to 10 of 16 entries Previous **1** 2 Next

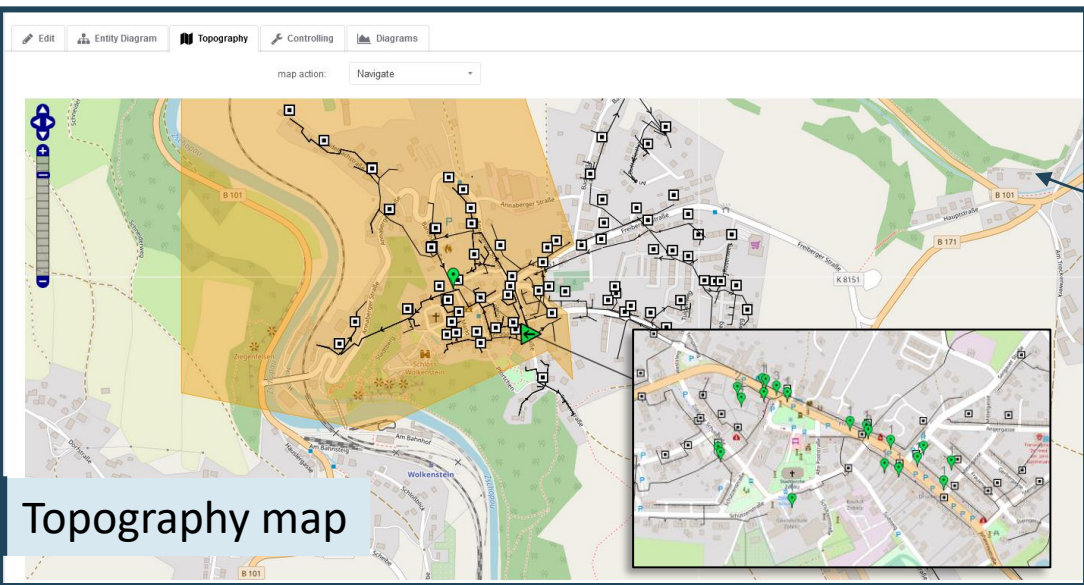
Show 10 entries [Print](#) [Export to](#) [Column Visibility](#) Search:

Index	ifAlias	ifName	DS SNR	Input Power Level dBmV	US Ch Freq MHz	docsIfSigQUncorrectables	Corr Errors (%)	docsIfSigQUnerrored	Active CM	Total CM	Modulation Profile	US Ch Width MHz
34793	Turnerstr US1	Ca8/0/1-upstream0	30.2	0	29	0	0	0	2	4	221	3.2
34794	Turnerstr US2	Ca8/0/1-upstream1	30.1	0	33.008	0	0	0	1	1	221	3.2
34795	Turnerstr US3	Ca8/0/1-upstream2	30.2	0	37.008	0	0	0	3	3	221	3.2
34796	Turnerstr US4	Ca8/0/1-upstream3	30.6	0	37.008	0	0	0	2	2	221	3.2



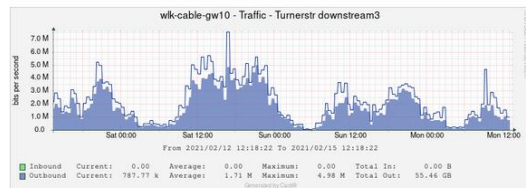
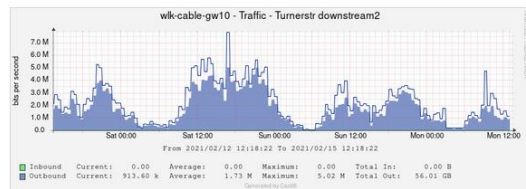
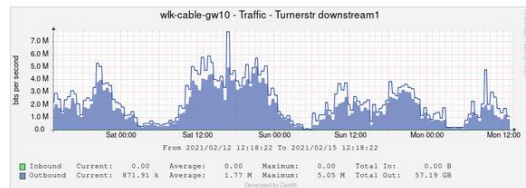
Detect

Severity	Type	Size	Host	Detected	Status	Actions
MAJOR	Outage	30/70	Wik - Turnerstr	35 minutes ago	Open	[Icons]



Index	ifAlias	docidDownChannel	DS Frequency	docidDownChannelModulation	DS Power
31461	Turnerst downstream1	25	242	qam64	44
31462	Turnerst downstream2	26	260	qam64	44
31463	Turnerst downstream3	27	258	qam64	44
31464	Turnerst downstream4	28	266	qam64	44
31465	Turnerst downstream5	29	274	qam64	44
31466	Turnerst downstream6	30	282	qam64	44
31467	Turnerst downstream7	31	290	qam64	44
31468	Turnerst downstream8	32	298	qam64	44
31469	Turnerst downstream9	33	306	qam64	44
31470	Turnerst downstream10	34	314	qam64	44

Technical overview



Diagrams

e.g. DS channel utilization

Representation of all subscriber modems in topography map



Detect

Severity	Type	Size	Host	Detected	Status	Actions
MAJOR	Outage	30/70	Wik - Turnerstr	35 minutes ago	Open	[Icons]

Edit element

NetElement Type* Cluster

Name* Wik - Turnerstr

IP address

ERD Link http://mgr01.wik.kcznet.tv:83/US/00C829EEF530/settings.html?pe=33

Geoposition 13.082791,50.651272

Parent Object Cisco DS+US: wik-cable-gw10

RF Card Setting (DSxUS) 16x8

Choose KML file Wolkenstein.kml

or: Upload KML file [Browse...]

Community RO

Community RW

Address Line 1

Address Line 2

Controlling Link rtp://wolkenstein-video.cpe.nms10.kcznet.tv:82

Enable AGC

AGC offset 0

Description

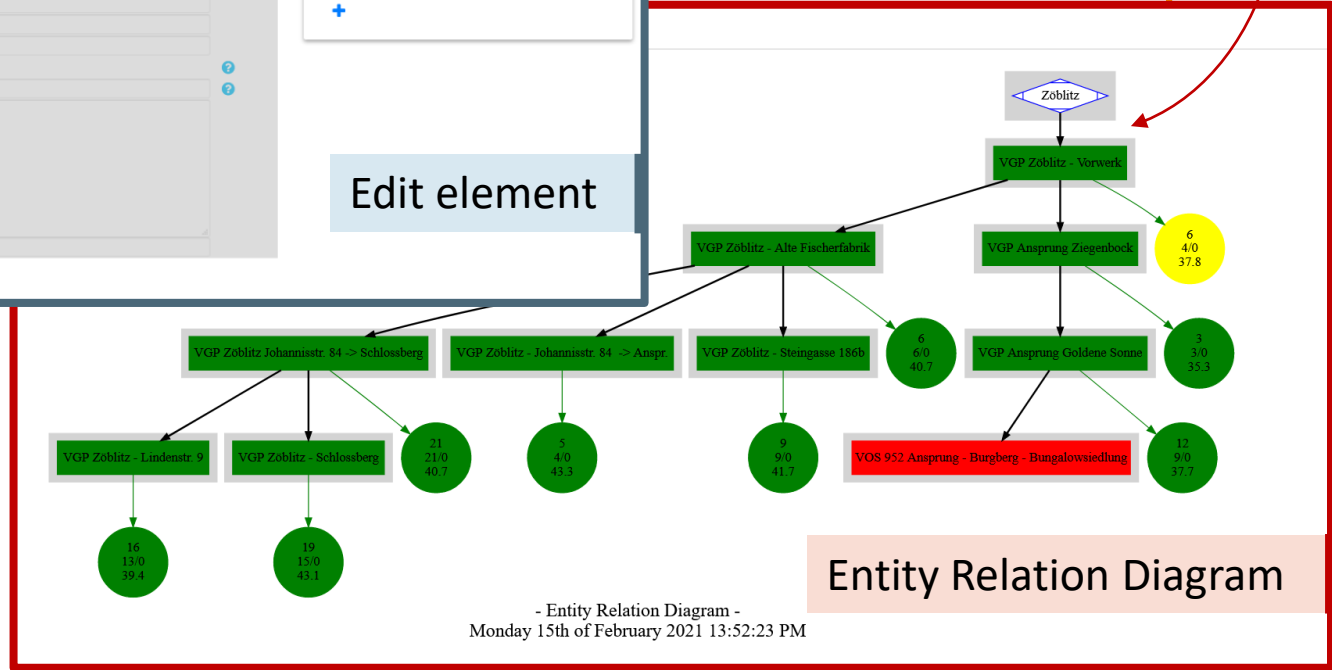
RKM line number

[Save]

Technical overview

Index	Alias	docidDownChannelId	DS Frequency	docidDownChannelModulation	DS Power
31481	Turnerst downbeam1	25	242	qam64	44
31482	Turnerst downbeam2	26	250	qam64	44
31483	Turnerst downbeam3	27	258	qam64	44
31484	Turnerst downbeam4	28	266	qam64	44
31485	Turnerst downbeam5	29	274	qam64	44
31486	Turnerst downbeam6	30	282	qam64	44
31487	Turnerst downbeam7	31	290	qam64	44
31488	Turnerst downbeam8	32	298	qam64	44
31489	Turnerst downbeam9	33	306	qam64	44
31490	Turnerst downbeam10	34	314	qam64	44

Edit cluster



Technical overview

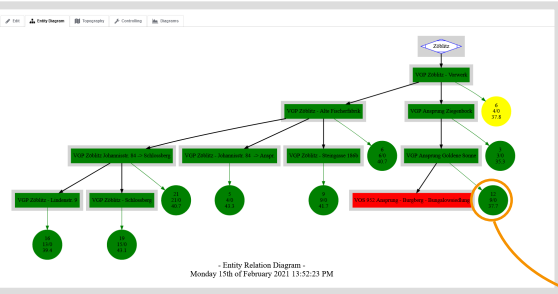
Representation of all customer-clusters in an entity relation diagram

Entity Relation Diagram

- Entity Relation Diagram -
Monday 15th of February 2021 13:52:23 PM



Detect



History

Show 10 entries

Type	Time
outage	2021-02-15 13:18:59
outage	2021-02-15 12:18:59
outage	2021-02-15 11:48:59
outage	2021-02-15 11:18:58
outage	2021-02-15 10:43:58
outage	2021-02-15 10:18:58
outage	2021-02-15 09:23:59
outage	2021-02-15 09:18:58
outage	2021-02-15 09:08:58
outage	2021-02-15 07:48:58

Previous Next

Vicinity Graph
Topography
PNM
Diagrams

map action: Navigate
filter by modem type: All

US Power
US SNR
DS Power
DS SNR
DS/US Power

Outages:

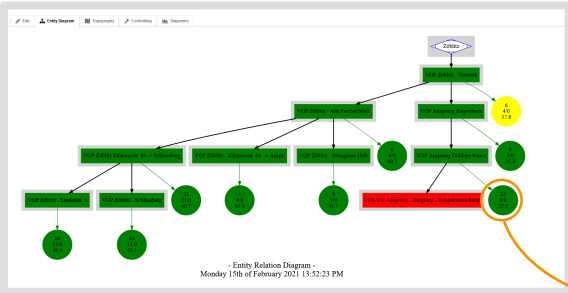
Proactive:

Feb 09 07:00
Feb 08 14:00 - Feb 15 13:00

- Topographic and historic overview of occurred impairments
- Live-values for US & DS Power, US & DS SNR



Detect



- PNM View displays micro reflections and noise in the upstream channel
- Live-values for US & DS Power, US & DS SNR

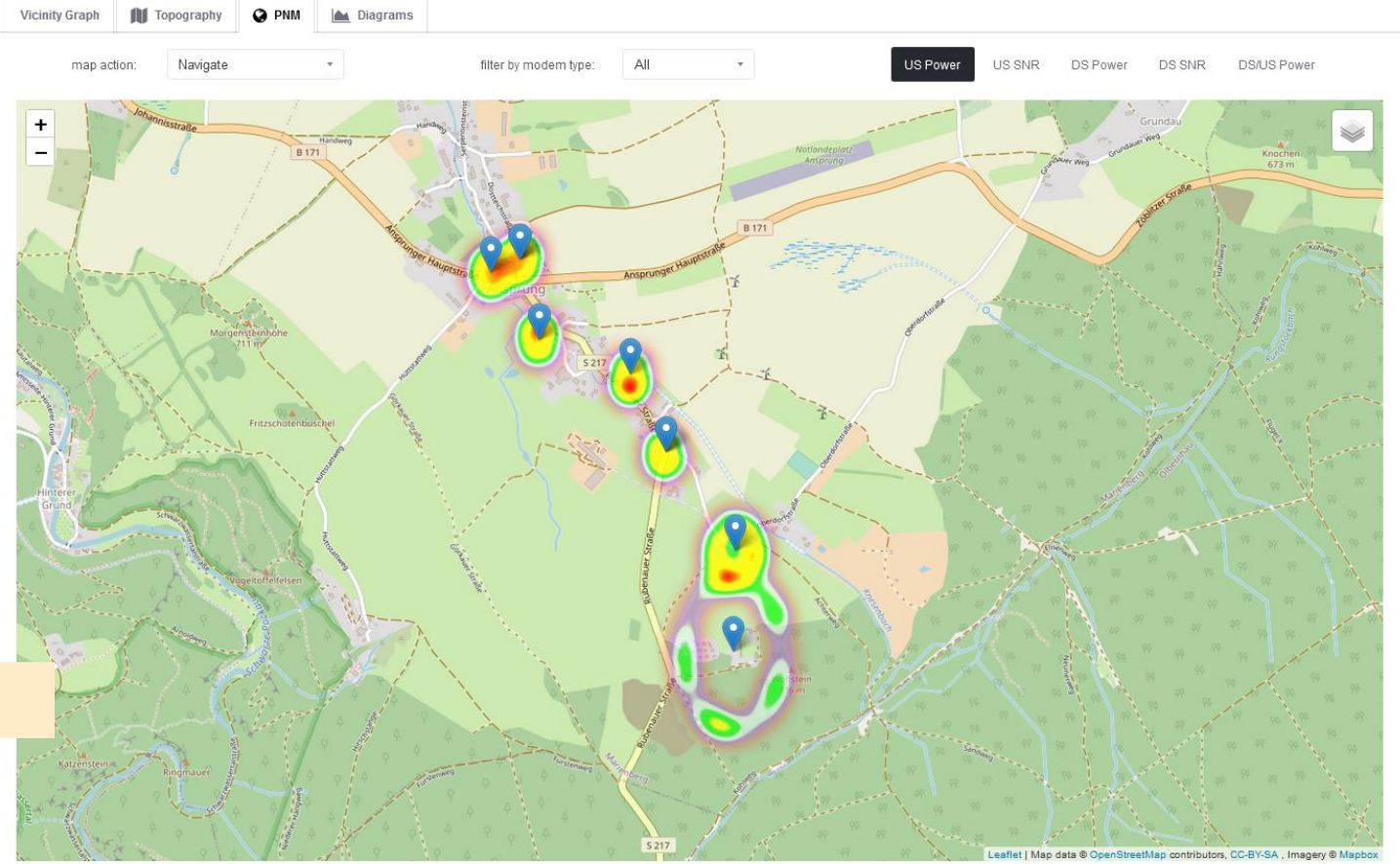
History

Show 10 entries

Type	Time
outage	2021-02-15 13:18:59
outage	2021-02-15 12:18:59
outage	2021-02-15 11:48:59
outage	2021-02-15 11:18:58
outage	2021-02-15 10:43:58
outage	2021-02-15 10:18:58
outage	2021-02-15 09:23:59
outage	2021-02-15 09:18:58
outage	2021-02-15 09:08:58
outage	2021-02-15 07:48:58

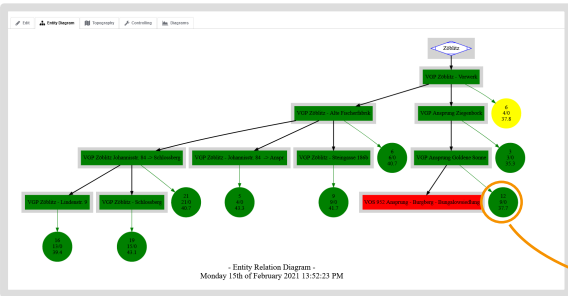
Previous Next

PNM View





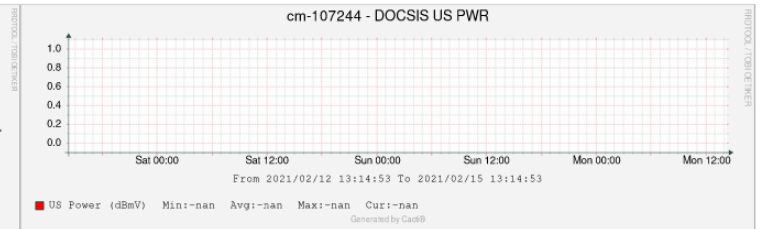
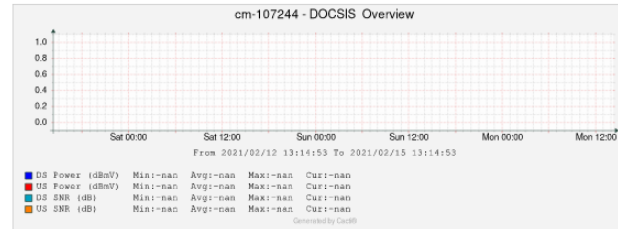
Detect



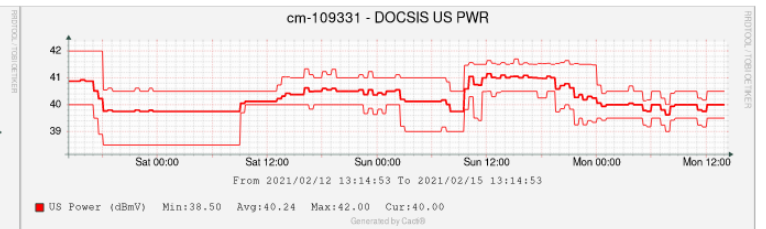
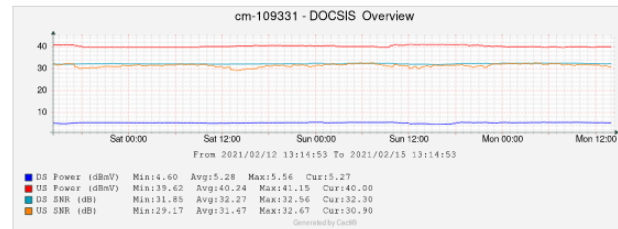
Vicinity Graph | Topography | PNM | **Diagrams**

From: -3d To: 0 US Power Submit

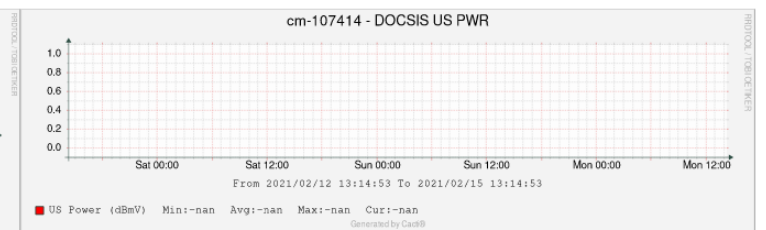
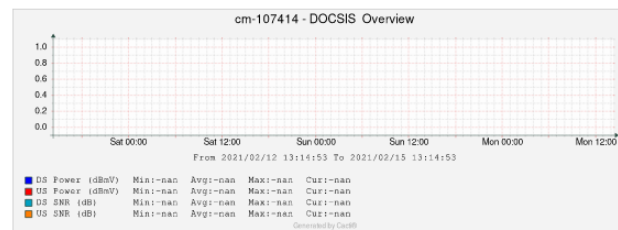
Unverricht - 09496, Marienberg, Ansprunger Hauptstraße 4 - 00:25:F1:76:7D:CA



Kürbitz - 09496, Marienberg, Bungalowsiedlung 19 - DC:39:6F:58:A4:A3

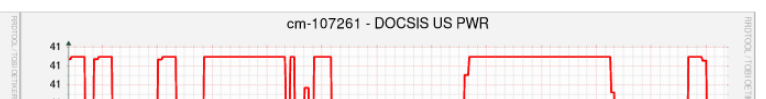
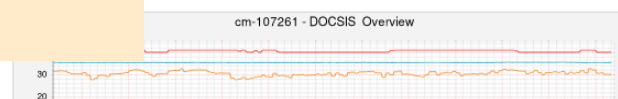


Unverricht - 09496, Marienberg, Dorfelstr. 7 - 00:d0:55:18:eb:3c



00:d0:55:18:ed:61

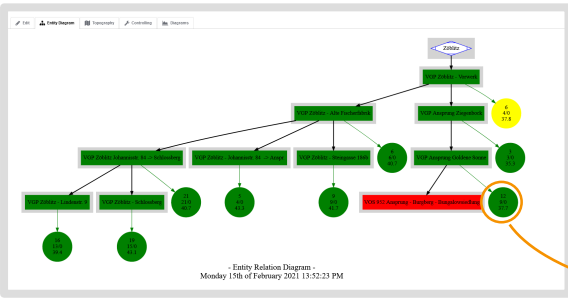
Diagrams



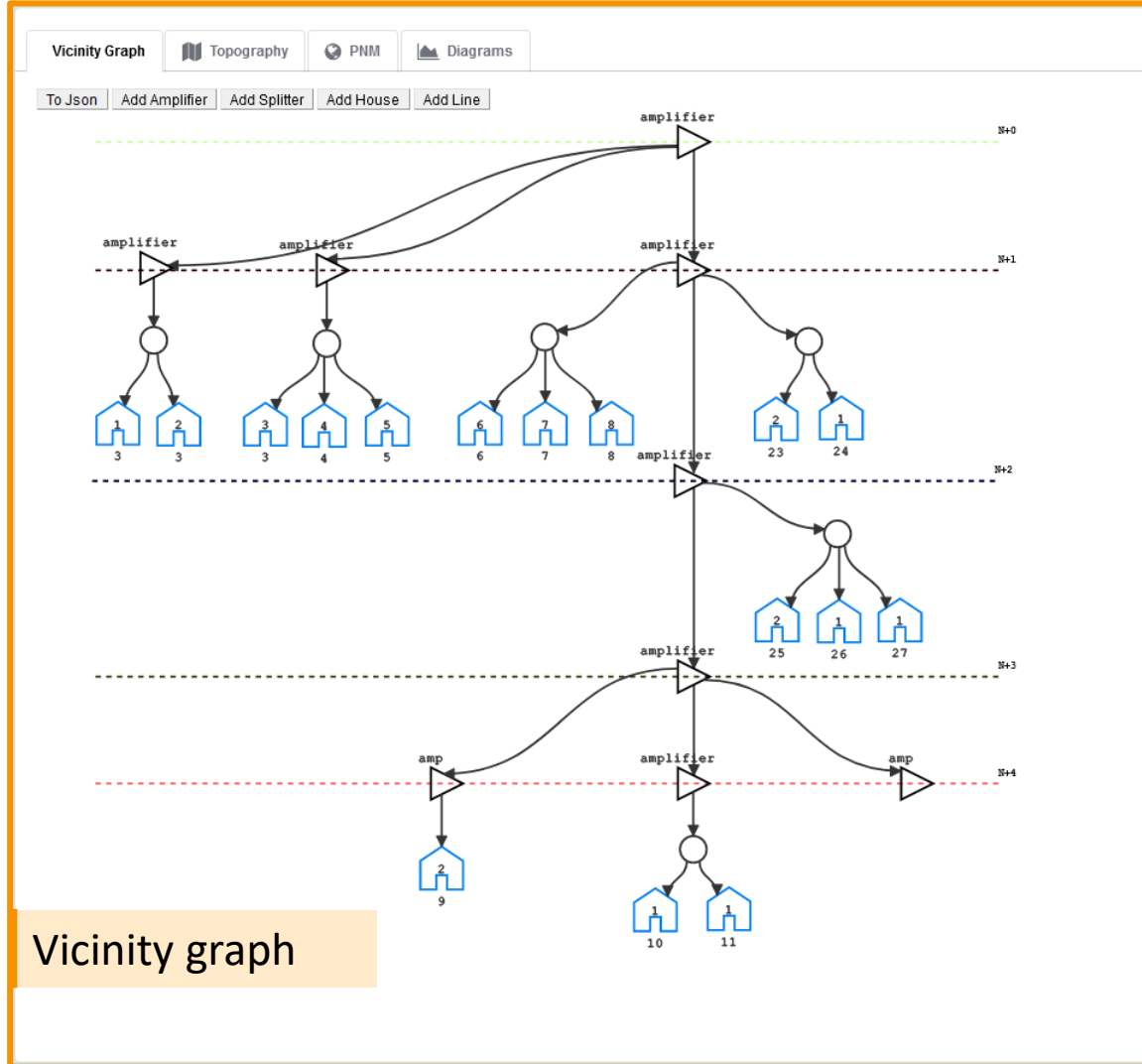
Present diagrams for all important DOCSIS parameters



Detect



Vicinity Graph displays a connection diagram



Vicinity graph



Detect

Dashboard overview

- Unites the most important information in an appealing presentation
- It categorizes and prioritizes problems according to your parameters
- Predicts upcoming impairments (proactive)
- Easily create a ticket with automated suggestions or even fully automate regular assignments
- Quick-Links to controlling and topography view
- Mute Problems while fixing them
- System summary displays all important system parameters

Geo map and Entity-Relation-Diagram (ERD):

- Show your IT infrastructure in real-time in topography map and ERD
- Each manageable IT device (e.g. using SNMP) you have been installed can be added to the diagram
- Intelligent fast adding of devices
- Show cable plans in geo maps combined with real-time data gathered via SNMP
- Vicinity Graph displays the course of the cable in a selected area
- PNM View detects micro reflections and noise in the upstream channel

CMTS real-time monitoring, analysis and management

- Real-time analysis and management of any MIB parameter, like CNR, input power level, frequency, modulation profile, active Modems, corrected errors
- Change parameters like frequency via GUI
- CMTS segmentation documentation: simply stay aware of your CMTS / RF connection plan by assigning every DS and US channel a corresponding Cluster (NetElement)

Customer geo map

- Representation of all customers in topography, ERD and direct linking of customer to provisioning system
- Modem geo-positioning system with automatically addressing geocoding
- Configurable assignment of customers into the specified networks and cluster -> draw your clusters on the map for maximum freedom
- Calculation of statistical modem measurement values

Reporting

- Periodically receive a report with all necessary information about the last period in a structured document.